



Contents lists available at ScienceDirect

Asian Pacific Journal of Tropical Disease

journal homepage: www.elsevier.com/locate/apjtd

Document heading

doi: 10.1016/S2222-1808(14)60644-7

© 2015 by the Asian Pacific Journal of Tropical Disease. All rights reserved.

Internal contamination with leech in a turkey

Mahmoud Bahmani¹, Majid Gholami–Ahangaran², Fereidoun Ghotbian³, Hassan Hassanzadazar⁴, Seyed Ahmad Karamati⁵, Reza Sepahvand^{6*}, Ayoub Darabi⁷

¹Lorestan University of Medical Sciences, Khorramabad, Iran

²Poultry Diseases Department, Veterinary Medicine Faculty, Islamic Azad University, Shahrekord Branch, Shahrekord, Iran

³Private Clinician of Dehloran City, Ilam Province, Iran

⁴Deputy for Food and Drug, Urmia University of Medical Sciences, Urmia, Iran

⁵Department of Medical Parasitology and Mycology, Faculty of Medicine, Shahid Beheshti University of Medical Sciences, Tehran, Iran

⁶Razi Herbal Medicines Research Center, Lorestan University of Medical Sciences, Khorramabad, Iran

⁷Veterinary Networking of Dehloran City, General Department of Veterinary, Ilam Province, Iran

PEER REVIEW

Peer reviewer

Dr. Moein Moghaddam, Putra University, Serdang, Selangor Darul Ehsan, Malaysia.
Tel: 03-79824687
E-mail: moeinmoghaddam@yahoo.com

Comments

This is a good study in which the authors described the leech infection in turkey. This is the first report of turkey's infestation and the second report of bird infestation with *L. nilotica* in the world.

Details on Page 159

ABSTRACT

Leech enters to mouth and nose through water. Nose and nasopharynx mucosa are the most preferred places for leech attachment with epistaxis and respiratory distress symptoms. But the leeches may rarely stick deeper to trachea or esophagus which could cause hematemesis, hemoptysis and severe respiratory distress. Leech infestation can cause gastrointestinal, respiratory and genital bleeding in rare cases. Various animals such as ruminants, single-toed and carnivores, are easily infected with leeches. In May 2014, a 2-year-old turkey infected with leeches through the contaminated drinking water was referred to a veterinarian with respiratory distress symptoms, anxiety, bleeding from the mouth in Maze–Abdali Village located at 17 km from Dehloran City of Ilam Province in the west of Iran. After physical observations, a moving dark green particle was seen. *Limnatis nilotica* were detected after separation from the oral cavity of turkey. Respiratory distress and oral cavity bleeding should be regarded in the areas where spring and flooded water were infested with leeches. Untreated and contaminated waters consumption should be prohibited.

KEYWORDS

Turkey, Leeches, *Limnatis nilotica*, Respiratory distress, Oral cavity bleeding, Iran

1. Introduction

Leeches are segmented worms of phylum Annelida. Leeches are aquatic worms that are capable of great expansion and contraction. Leech has 3 jaws with 100 teeth in each jaw and approximately 300 ultrafine teeth. So far, 650 types of leeches were known including blood-sucking, carnivores and toxic types^[1,2]. Aquatic leeches live in flowing waters with weaker jaws than earthworms. For this reason, they cannot bite and cut the skin and are incapable to attack the mucosal areas for feeding and blood-sucking

that cause anemia. Leech infestation occurs through contaminated water^[3–10].

Leech infestation is a rare cause of gastrointestinal, respiratory and genital bleedings. Leech saliva contains potent anticoagulant such as hirudin which inhibits thrombin and can impair blood coagulation. Usually, leech enters to mouth and nose through water. Nose and nasopharynx mucosa are the most preferred sites for leech attachment with epistaxis and respiratory distress symptoms. But the leeches may rarely stick deeper to trachea or esophagus which could cause hematemesis,

*Corresponding author: Dr. Reza Sepahvand, Razi Herbal Medicines Research Center, Lorestan University of Medical Sciences, Khorramabad, Iran.

Tel: 0986613204005

E-mail: sepahvandreza90@yahoo.com

Foundation Project: Supported by Veterinary Networking, Dehloran City (Grant No. 778).

Article history:

Received 26 May 2014

Received in revised form 2 Jun, 2nd revised form 11 Jun, 3rd revised form 18 Jun 2014

Accepted 25 Jun 2014

Available online 23 Jul 2014

hemoptysis and severe respiratory distress^[11].

Aquatic leeches, particularly *Limnatis nilotica* (*L. nilotica*), may enter the body through drinking water. Some may enter the excretory openings of persons who bathe with infested water. *L. nilotica*, which inhabits lakes and streams of Southern Europe, North Africa, and the Middle East, attains length of up to 12 cm or 4.75 inches, but smaller and younger specimens are the most likely to enter the body^[12].

Research studies showed the transmission potential of bacterial, viral and parasitic diseases of leeches. Fatal diseases such as AIDS, hepatitis B, toxoplasmosis and syphilis are transmitted by leeches^[13–15]. Variety of animals such as ruminants, single-toes and carnivores are infected with leeches^[16].

According to the author's knowledge, there was a report of hirudiniasis in birds showed a chicken infected with leeches from Iran. So the present case is the first report of leech infestation on turkey and the second report on birds.

2. Case report

In May 2014, a 2-year-old turkey infected with leech through the contaminated drinking water was referred to a veterinarian with respiratory distress symptoms, anxiety, bleeding from the mouth in Mazabdolahy Village located at 17 km from Dehloran City of Ilam Province in the west of Iran (Figure 1A). After physical observations, 1.6 cm moving dark green particles with orange lines in both sides can be seen. *L. nilotica* were detected after separation from the oral cavity of turkey (Figure 1B).

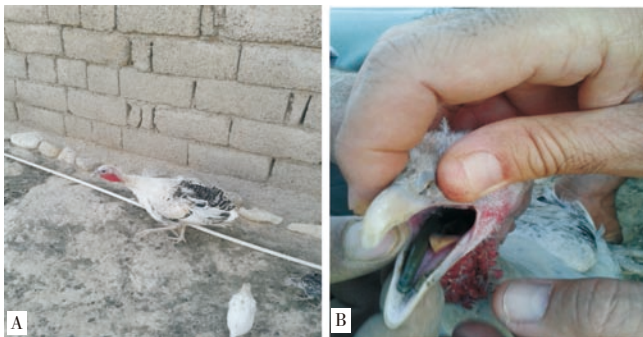


Figure 1. A: 2-year-old turkey; B: *L. nilotica* separated from interior side of turkey's beak.

3. Discussion

L. nilotica infestation is a zoonotic parasitic disease^[17]. Humans are usually infected with a horrific *L. nilotica*^[18,19]. Leech biting is painless^[20]. Due to the aggressive nature, leech attacks to various parts of mucosa such as nose, larynx, behind uvula, under vocal cord, posterior vaginal fornix, vaginal wall, uterine cavity, nasopharynx, nostrils, male urethra and eyes. This information has been reported from different parts of Iraq, Ethiopia, India, Turkey and Oman^[21–30].

First sheep infestation with *L. nilotica* was reported from Iran. There were 6–7 leeches in the oral cavity in each 10 infected sheep in Kurdish race^[31]. Another report about lambs and kids oral cavities infestation in Iran was because of the consumption of contaminated spring water^[32].

There was a report of mouth infection of a pregnant native

cow with *L. nilotica* from Ilam (west province of Iran) with symptoms such as respiratory distress, anorexia, anxiety and hematological changes^[33].

Bahmani *et al.* reported an oral infection of a native dog with two *L. nilotica* in Shahrekord (south–west of Iran)^[34]. Anemia with 34% hematocrit, hemoglobin decreasing, localized infection with fibrinolytic degradation, respiratory distress and fear was evident in the dog^[34]. A report of oral contamination in a 3-year-old donkey was also reported from Dehloran^[35].

The first report of bird infestation with leeches in the world has been reported from Iran. Bahmani *et al.* has reported the infection with *L. nilotica* in the oral cavity of a native chicken^[36]. In this study, the infection of a turkey with leech was observed after drinking the contaminated spring water. This report is the first report of turkey's infection and the second report of bird infestation with *L. nilotica* in the world.

Leeches contamination is a common parasitic infection in humans and animals, especially after the consumption of contaminated water, so the prevention of contamination with leeches and the symptoms of infection (anemia, respiratory distress, tachycardia, anxiety, anorexia, *etc.*) should be proceeded and the use of untreated and infected water should be prohibited.

Most rural population and livestock consume spring and flowing water, so it is recommended that probable water contamination with leeches should be informed for the prevention of leech infestation and the complications.

Conflict of interest statement

We declare that we have no conflict of interest.

Acknowledgements

Authors wish to appreciate Veterinary Networking, Dehloran City for their good assistances (Grant No. 778).

Comments

Background

Leech enters to mouth and nose through water. Nose and nasopharynx mucosa are the most preferred places for leech attachment with epistaxis and respiratory distress symptoms, but it may rarely stick deeper to trachea or esophagus, causing hematemesis, hemoptysis and severe respiratory distress. Leech infestation can cause gastrointestinal, respiratory and genital bleeding in rare cases. Various animals such as ruminants, single-toed and carnivores are easily infected with leeches.

Research frontiers

According to author's knowledge, there was a report of hirudiniasis in birds showed a chicken infected with leeches from Iran, so the present case was the first report of infestation with leech on turkey and the second report infestation on birds.

Related reports

Bahmani *et al.* reported an oral infestation of a native dog with two *L. nilotica* in Shahrekord (south–west of Iran).

Anemia with 34% hematocrit, hemoglobin decreasing, localized infection with fibrinolytic degradation, respiratory distress and fear was evident in dog. A report of oral contamination in a 3-year-old donkey was also available from Dehloran. First reports of bird infestation in the world with leeches has been reported from Iran. Bahmani *et al.* has reported the infection of the oral cavity in a native chickens with *L. nilotica*. In this study, the infection of a turkey with leech was observed after drinking contaminated spring water.

Innovations & breakthroughs

This paper is the first report of turkey's infestation and and the second report of bird infestation with *L. nilotica* in the world.

Applications

Most rural populations and livestock consume spring and flowing water, so it is recommended that probably waters contamination with leeches should informed for the prevention of leech infestation and the complications.

Peer review

This is a good study in which the authors described the leech infection in turkey. This is the first report of turkey's infestation and and the second report of bird infestation with *L. nilotica* in the world.

References

- [1] Krüger C, Malleyeck I, Olsen OH. Aquatic leech infestation: a rare cause of severe in an adolescent Tanzanian girl. *Eur J Pediatr* 2004; **163**(6): 297–299.
- [2] Bahmani M, Rafieian–Kopaei M. Medicinal plants and secondary metabolites for leech control. *Asian Pac J Trop Dis* 2014; **4**(4): 315–316.
- [3] Reza SN, Shabbir SM, Anwar–ul–Haq. Leech infestation and its association with water srinking habits. *J Coll Physicians Surg Pak* 2006; **16**(3): 175–178.
- [4] Kuehnemund M, Bootz F. Rare living hypophryngel foreign body. *Head Neck* 2006; **28**(11): 1046–1048.
- [5] Mohammad Y, Rostum M, Dubaybo BA. Laryngeal hirudiniasis: an unusual cause of airway obstruction and hemoptysis. *Pediatr Pulmonol* 2002; **33**(3): 224–226.
- [6] Almallah Z. Internal hirudiniasis in man with *Limnatis nilotica*, in Iraq. *J Parasitol* 1968; **54**(3): 637–638.
- [7] Cundall DB, Whitehead SM, Hechtel FO. Severe anaemia and death due to the pharyngeal leech *Myxobdella africana*. *Trans R Soc Trop Med Hyg* 1986; **80**(6): 940–944.
- [8] Duffy S. A case of series of bleeding due to leech infestation from the Gimbie Region, Ethiopia. *Trop Doct* 2008; **38**(1): 58–59.
- [9] Singh M, Naim AF. Respiratory obstruction and haematemesis due to leech. *Lancet* 1979; **2**(8156–8157): 1374.
- [10] Tuner FM. Pharyngeal leeches. *Lancet* 1969; **2**(7635): 1400–1401.
- [11] Hemmati M, Sat V, Slgee Gh. A case report of vomiting blood with esophageal leech biting. *Kermanshah J Med Sci* 2002; **6**(4): 55–58.
- [12] Eftekhari Z, Bahmani M, Mohsenzadeghan A, Ahangaran MG, Abbasi J, Alighazi N. Evaluating the anti–leech (*Limnatis nilotica*) activity of methanolic extract of *Allium sativum* L. compared with levamisole and metronidazole. *Comp Clin Path* 2012; **21**(6): 1219–1222.
- [13] Syphilis communicated by leeches. *Lancet* 1828; **10**(240): 14.
- [14] Narendranathan M. Leeches and hepatitis B. *Lancet* 1992; **339**(8805): 1362.
- [15] Nehili M, Iik C, Mehlhorn H, Ruhnau K, Dick W, Njayou M. Experiments on the possible role of leeches as vectors of animal and human pathogens: a light and electron microscopy study. *Parasitol Res* 1994; **80**(4): 277–290.
- [16] Mehrzadi S, RaziJalali MH, Bahmani M, Rahbar A. Report infestation of *Limnatis nilotica* (leech) in sheep, cattle, dogs and donkeys in the city of Dehloran. Tabriz: Sixth National Conference Veterinary Clinical Science; 2007. Iran: Islamic Azad University of Tabriz; 2007, p. 648.
- [17] Bahmani M, Rafieian–KM, Parsaei P, Mohsenzadegan A. The anti–leech effect of *Peganum harmala* L. extract and some anti–parasite drugs on *Limnatis nilotica*. *Afr J Microbiol Res* 2012; **6**(10): 2586–2590.
- [18] Hoeppil R, Tang CC. Leeches in old Chinese and European medical literature. *Chin Med J* 1941; **59**: 359–378.
- [19] Payton B. History of medicinal leeching and early medical references. In: Muller KJ, Nicholls JG, Stent GS, editors. *Neurobiology of the leech*. New York: Cold Spring Harbor Laboratory Press; 2010, p. 27–34.
- [20] Stammers FM. Observations on the behaviour of land–leeches (genus *Haemadipsa*). *Parasitology* 1950; **40**(3–4): 237–246.
- [21] Almallah Z. Internal hirudiniasis as an unusual cause of haemoptysis. *Br J Dis Chest* 1968; **62**: 215–218.
- [22] Hailemariam B. Post menopausal vaginal bleeding due to vaginal wall leech infestation. *Ethiop Med J* 1995; **33**(3): 183–185.
- [23] Solomon E. Leech–an unusual cause of (laryngo–tracheal) obstruction. *Ethiop Med J* 1991; **29**(3): 141–142.
- [24] Mekasha A. Post menopausal vaginal bleeding due to vaginal wall leech infestation. *Ethiop Med J* 1995; **33**(4): 271.
- [25] Prasad SB, Sinha MR. Vaginal bleeding due to leech. *Postgrad Med J* 1983; **59**(690): 272.
- [26] Gupta SC. Nasal hirudiniasis in Kumaon Hills, India. *Trop Geogr Med* 1980; **32**(4): 303–305.
- [27] Rao KP, Grover YK, Mitra AK. Nasal hirudiniasis. *J Indian Med Assoc* 1986; **84**(2): 55–56.
- [28] Mitra PN. A case of hirudiniasis of the male urethra. *Ind Med Gaz* 1926; **61**: 22.
- [29] Saha S, Saha I. Unusual foreign body causing bleeding per urethra. *J Indian Med Assoc* 1977; **69**(12): 286–287.
- [30] Alcelik T, Cekic O, Totan Y. Ocular leech infestation in a child. *Am J Ophthalmol* 1997; **124**(1): 110–112.
- [31] Bahmani M, Zamani P, Meshgi B, Zadeh AR. The first reported infestation in sheep at *Limnatis nilotica* in Iran. Sixth National Conference and the First Regional Congress of Parasitology and Parasitic Diseases; 2006. Karaj, Iran; 2006, p. 384.
- [32] Bahmani M, Rasouli M, Parsaei P, Bahnihabib E, Saki K, Ghotbian F. *Limnatis nilotica* infestation in ram and kid in Dehloran City, Ilam Province, west of Iran. *Asian Pac J Trop Dis* 2013; **3**(2): 155–157.
- [33] Bahmani M, Eftekhari Z, Mohsezadeghan A, Ghotbian F, Alighazi N. Leech (*Limnatis nilotica*) causing respiratory distress in a pregnant cow in Ilam Province in Iran. *Comp Clin Path* 2012; **21**: 501–503.
- [34] Bahmani M, Nekouei SH, Parsaei P, Saki K, Banihabib EK. Case report infestation with *Limnatis nilotica* in a Persian male dog from Shahrekord. *J Mod Vet Res* 2011; **2**(6): 29–32.
- [35] Bahmani M, Karamati SA, Anari MMH, Rahimirad A, Asadzadeh J, Kheiri A, et al. Case report of oral cavity infestation in a 3-year old jackass with *Limnatis nilotica* from Ilam Province, west of Iran. *Asian Pac J Trop Dis* 2014; **4**(3): 210–212.
- [36] Bahmani M, Golshahi H, Ghotbian F, Bahmani F. Internal hirudiniasis in a hen (*Gallus gallusdomesticus*)–the first report in literature. *Asian Pac J Trop Dis* 2013; **3**(3): 232–234.